

## 1. SPECIFICATIONS

---

Copy Paper Size:	Maximum A3 or 11" x 17" Minimum B5R or 5 1/2" x 8 1/2"
Copy Paper Weight:	Black or single color copies: 52 to 104g 14 to 281b Full color copies: 64 to 104g 17 to 281b
Paper Feed System:	Feed and reverse roller (FRR)
Power Source:	100V, 50/60 Hz, 0.6A (From Copier)
Dimensions (W x H x D):	835mm x 425mm x 677.6mm (32.9") (16.7") (26.7")
Weight:	55 kg (1211b)

## **2. ACCESSORY CHECK**

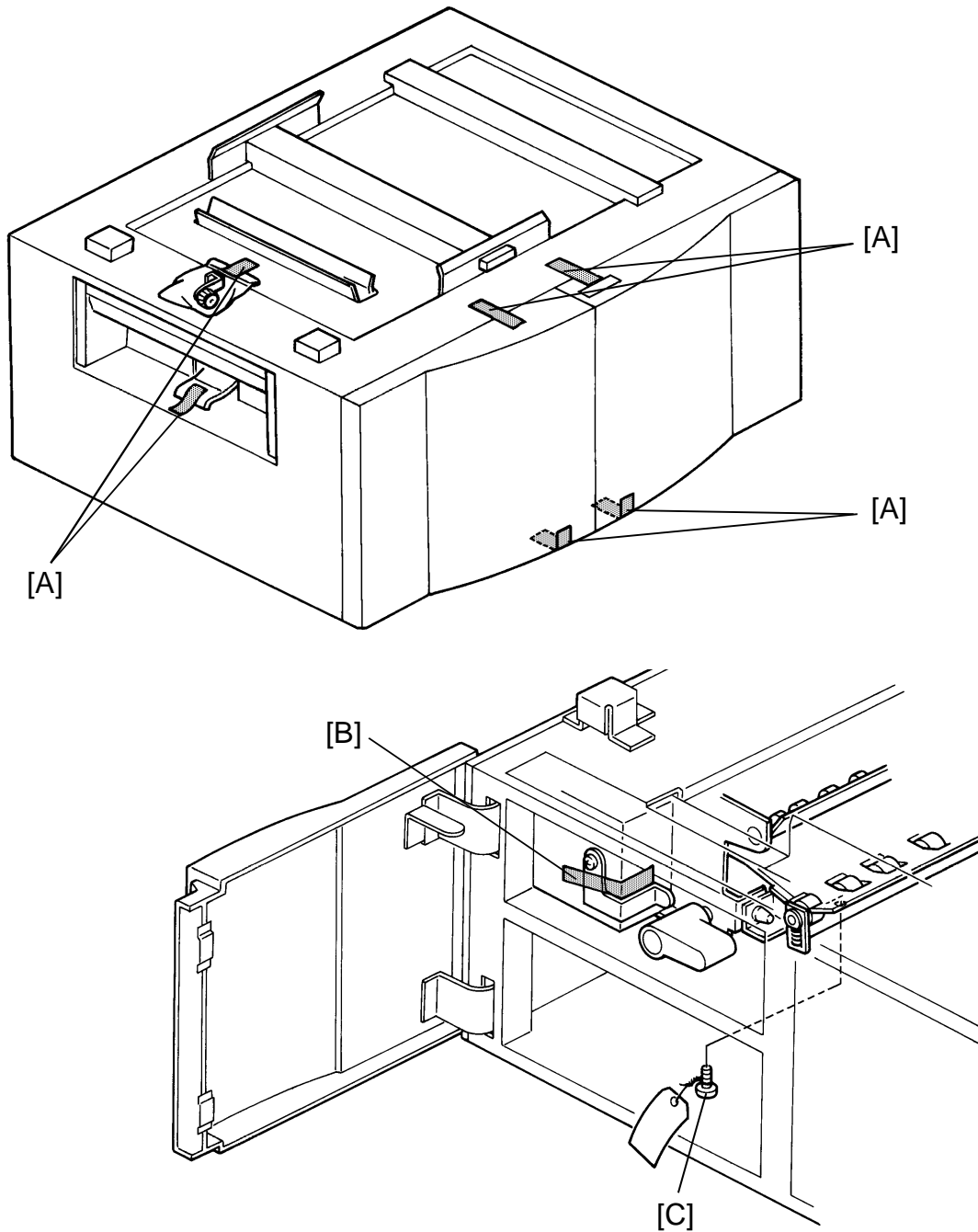
---

Check the quantity and condition of the accessories in the box according to the following list:

1. Installation Procedure.....	1
2. Idle Gear .....	1
3. Harness Bracket.....	1
4. Grounding Screw.....	4
5. Screw.....	1
6. Washer .....	1
7. New Equipment Condition Report..... (17 and 27 machines)	1
8. Envelop for N.E.C.R. (17 machine only) .....	1
9. Multilingual Decal (16, 25, 26 and 27 machines) .....	1

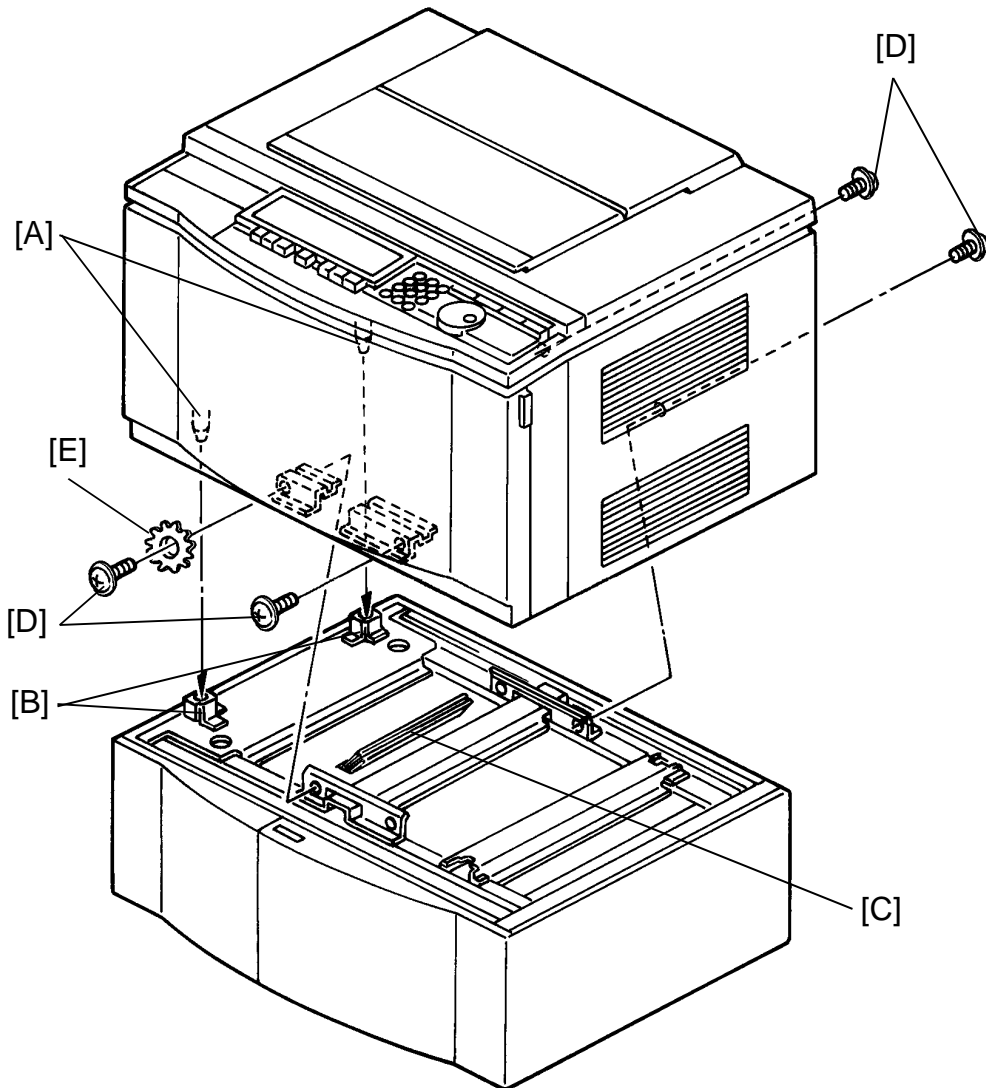
### 3. INSTALLATION PROCEDURE

---



**NOTE:** Turn off the main switch and remove the plug.

1. Remove all external strips of tape [A].
2. Open the right and left doors, and remove the strips of tape [B] and the screw [C].

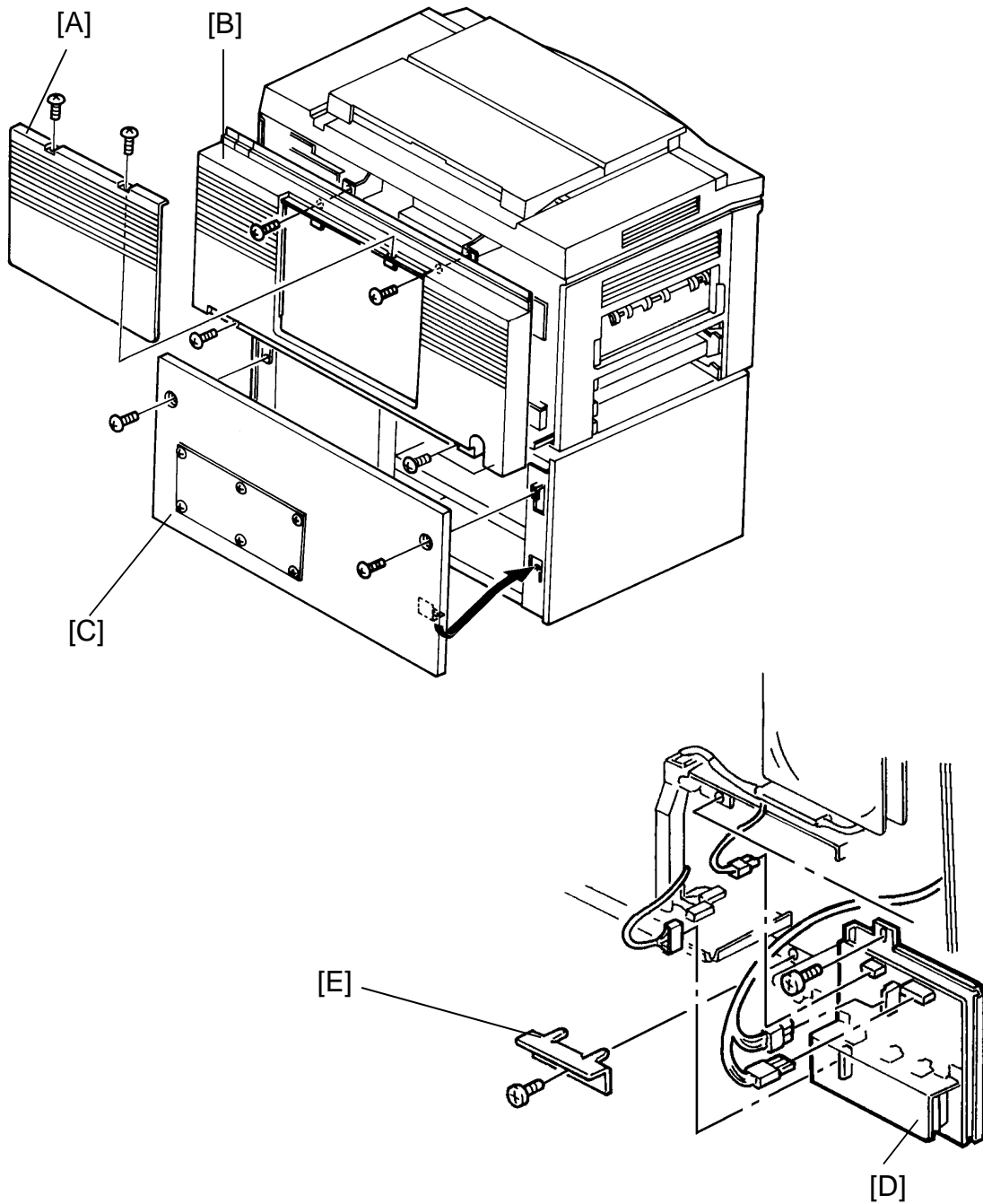


3. Place the copier on the paper feed unit aligning the positioning pins [A] of the copier with the positioning holes [B] of the paper feed unit.

**NOTE:** a) Take care that the paper bank harness does not get caught between the copier and the table during positioning.

b) Take care not to damage the entrance guide plate [C].

4. Secure the copier to the paper feed unit as shown (4 grounding screws [D], 1 washer [E]).



5. Remove the toner collection bottle cover [A] (2 screws).

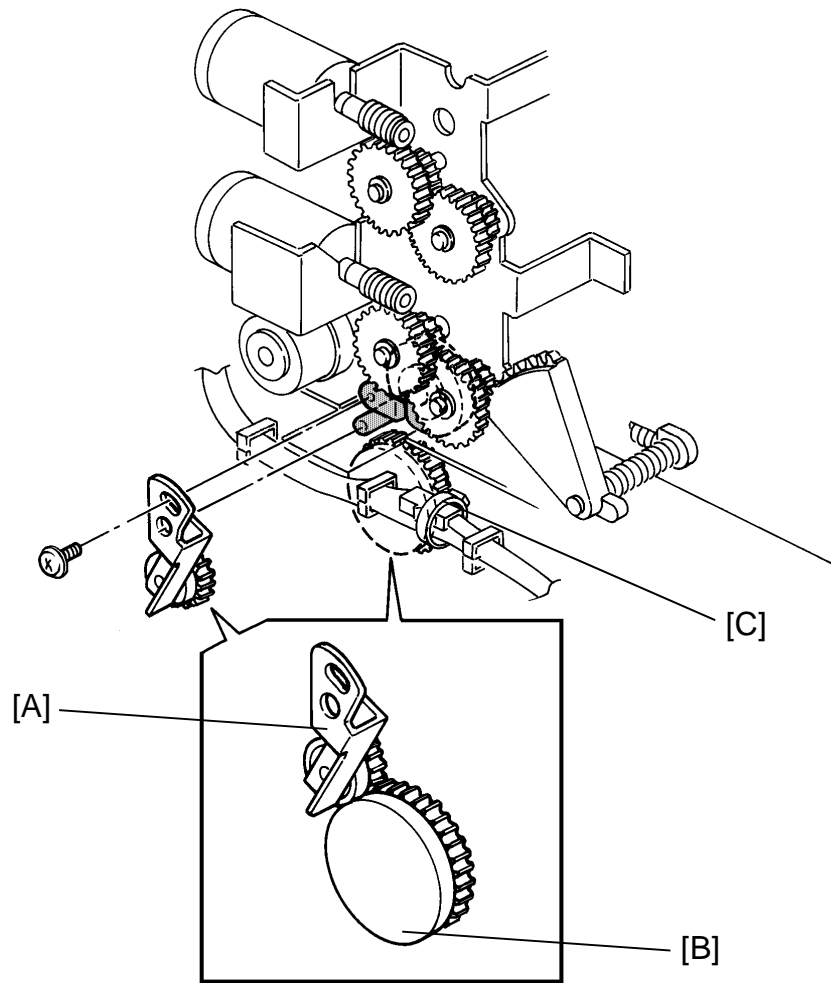
6. Remove the copier rear cover [B] (5 screws).

7. Remove the rear cover [C] (2 screws).

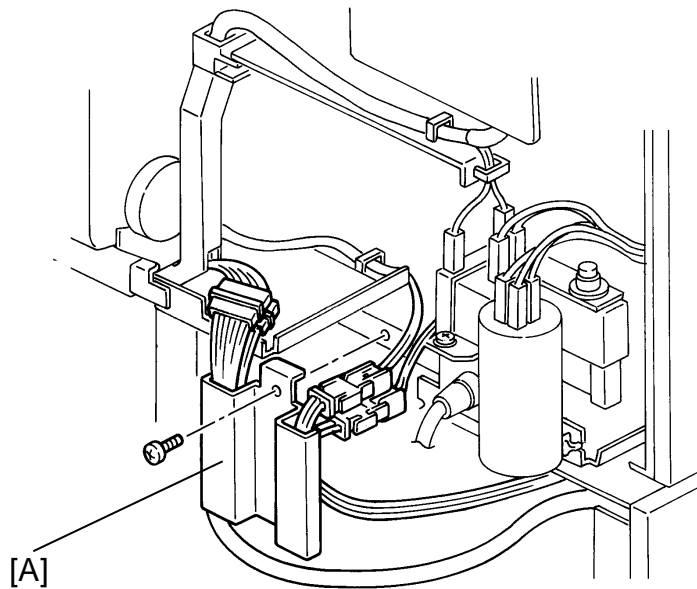
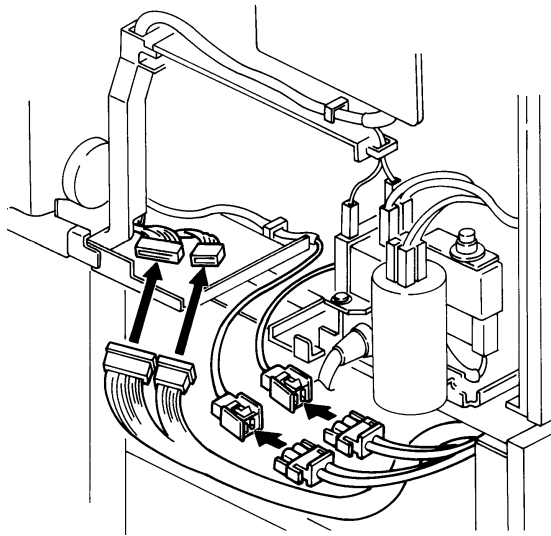
8. Remove the AC drive board [D] (1 screw, 4 connectors).

**NOTE:** Press lightly against the board while removing the connectors.

9. Remove the securing bracket [E] (1 screw).



10. Pull the copier left lift handle and install the idle gear [A] (1 screw) as shown.
11. Fix the idle gear when it contacts the black roller [B].
12. Cut the tie wrap [C] of the 2P connector with a pair of nippers, and disconnect the connector.

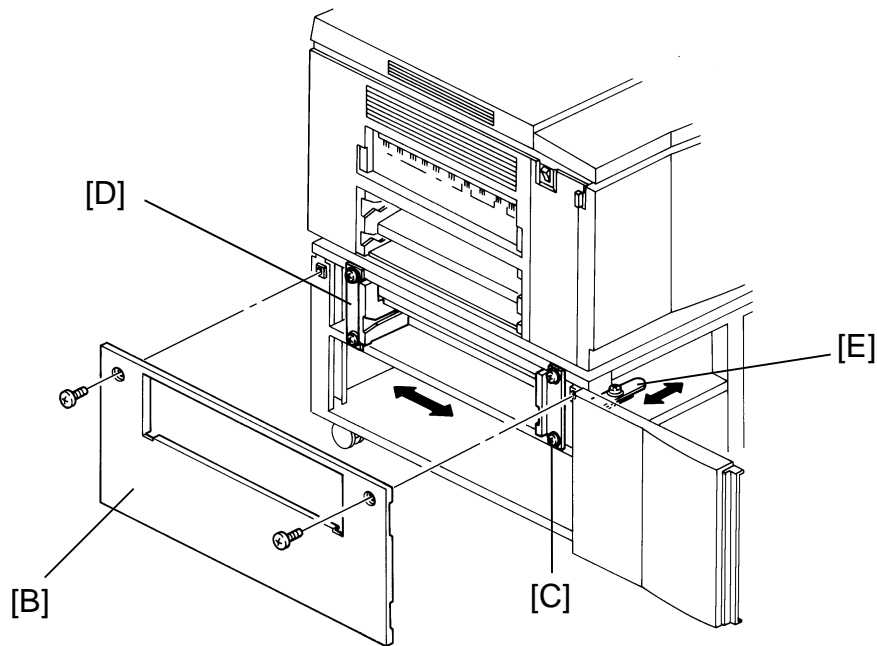
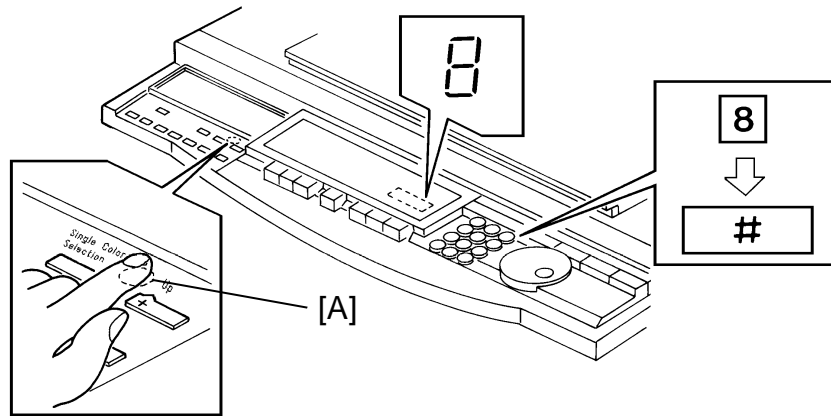


13. Connect the paper feed unit harness to the copier harness as shown.

14. Install the harness bracket [A] (1 screw):

- a) Use the screw (#9).
- b) Set the AC harness in the left side of the harness bracket, and the DC harness in the right side.

15. Reassemble all parts.



16. Plug in the copier and turn on the main switch. After warming up, enter SP mode as follows: while pressing the SP mode [A] and "8" keys, press the enter key.

17. Enter the 3rd paper feed operation mode as follows:



18. Exit SP mode by pressing the Clear Modes key.

19. Adjust the horizontal registration of the 3rd paper feed section:

- 1) Compare the copy from the 1st paper feed section with that from the 3rd paper feed section.
- 2) Remove the left cover [B] of the 3rd paper feed unit (2 screws).
- 3) Loosen the 4 screws [C] of the paper feed unit [D].
- 4) Move the paper feed unit and actuator [E] the same amount that it was adjusted.
- 5) Reassemble all parts.